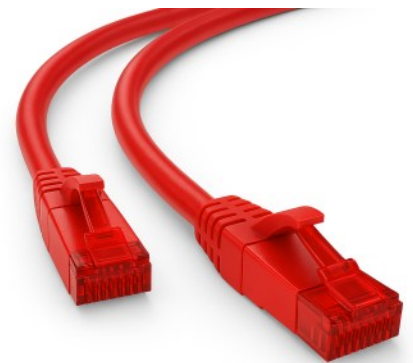
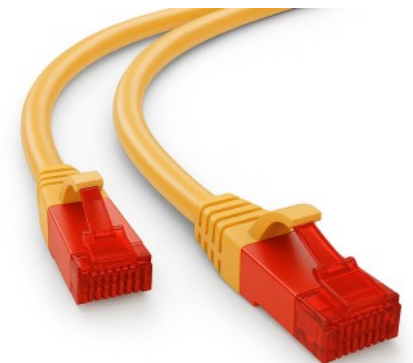
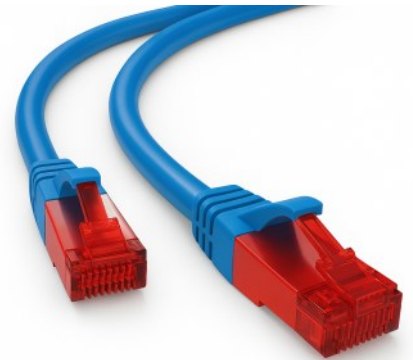


Category 6A 24AWG U/UTP Patch Cord / Assemblies

Features and Benefits

- **Applications:**
 - Data Centers & Server Rooms
 - Office & Enterprise Networks
 - Telecommunications & ISP Installations
 - Audio/Video, CCTV Systems & Smart Homes.
- **Key Features:**
 - Cat 6A supports frequencies up to 500 MHz..
 - Cat6A Supports 1 Gbps up to 100 m; 10 Gbps over shorter distances (≤55 m).
 - Support PoE/PoE+/PoE++ (IEEE 802.3af/at/bt).
 - F/UTP and SF/UTP Cable Minimizes EMI and RFI Interference.
 - This molded patch cable offers high quality connectors comprised of 50-micron gold, to deliver optimum conductivity while eliminating signal loss due to oxidation or corrosion..
 - U/UTP 24AWG Stranded flexible patch cable and terminating with RJ45 Modular Plugs.
 - Performance Tested with Fluke and Wired T568B.
 - The optional outer LSZH jacket is flame-retardant and produces minimal smoke and zero halogen gases during combustion.
 - Available in various lengths and Color.
- **Standard:**
 - ISO/IEC 11801 Class EA.
 - ANSI/TIA-568.2-D
 - IEC 60332-1, (LSZH Version).
 - RoHS & REACH



Physical & Mechanical Specifications

Category	6A
Cable No. of Pair & Conductor	4 PR /stranded Bare Copper / 24 AWG
Cable Type & Shielded	U-UTP / Un-Shielded
Cable Outer Jacket	LSZH
Connectors	RJ-45 8P8C PLUG./50μ" Gold-plated Contacts
Min. Bend Radius Installation	4x Cable-Ø
Operating Temperature	-10°C to +65°C
Storage Temperature	- 20°C to +75°C

Electrical Characteristics

Mutual Capacitance	≤ 1600 pF/km
Insulation Resistance	≥ 500 MΩ ·km
Max. loop resistance	≤ 95.0 Ω/Km
Current Rating	1.5 A
Conductor Resistance	≤ 87.6 Ohms/km
Frequency Range	500 MHz

CS-C6AUFP-XX-XX-XXXX



Part No.	Type of Class	Type of Cable	Optional Lengths (Meter)	Outer Jacket Color Options	Outer Jacket	Packaging
CS-C6AUUPC-XX-XX-XXX	CAT-6A	U-UTP	01,02,03,04,05 10,15,20,25 & 30	Blue-BU	LSZH	1 Piece Packing Bag