

SRF 42U FLOOR STANDING SERVER RACK & ENCLOSURE

Features and Benefits

- Applications:**

SRF Server racks and cabinets are structured enclosures designed to organize, secure, and optimize IT equipment, like servers, networking gear, storage arrays, and telecommunications systems. They are the foundational component of a well-organized data center, server room, or network closet.
- Key Features:**
 - Surface finish:** Degreasing, pickling, phosphating, electrocoating, and powder coating with a thickness of 80µm–100µm. Compliant with RoHS standards.
 - Ventilation:** Perforated front and rear doors (often >80% open area), and to work with hot aisle/cold aisle containment systems.
 - Side Panels:** Lockable and removable side panels for easy installation and maintenance.
 - Cable Access:** Top/Bottom Brush strips or grommets for cable entry/exit.
 - Cable Management:** Multifunctional cable management boards located on both sides of the rear Section.
 - Mounting:** Mounting rails with clearly marked U positions for precise equipment installation.
 - Cabinet Structure:** Efficient and robust cabinet connections for enhanced stability.
 - Grounding:** Provision of earthing kits for safety and compliance.
 - Security:** Lockable front and rear doors to keep equipment secure.
 - Base Options:** Optional plinth available to support cabinet fixing, bottom wiring, and ventilation.
 - Mobility & Support:** Equipped with adjustable feet, heavy-duty castors, and support feet for flexible placement.
 - Load Capacity:** Maximum static load capacity of up to 1600 kg.
 - Standard:** Comply with ANSI/EIARS-310-D, DIN41491;PART1, IEC297-2, DIN41494;PART7, /T3047.2-92, ETSI and 19 inch international standard
 - Accessories:** A full range of optional accessories available for customization.



Physical Specification

- Structure:**
 - Excuser Type:** SRC Series Server Rack /Enclosure
 - Mounting Type:** Horizontal 19 inch front & Rear
 - Material:** Cold-rolled Steel
 - Frame Thickness:** 2.0mm
 - Mounting Rail Thickness:** 2.0mm
 - Side Panel Thickness:** 1.5mm
 - Front & Back Doors Thickness:** 1.5mm
 - Fix & Sliding Shelf Thickness:** 1.5mm
 - Color:** Black (RAL9004)



Multi-Directional Casters.



Doors and side panel Locking Systems

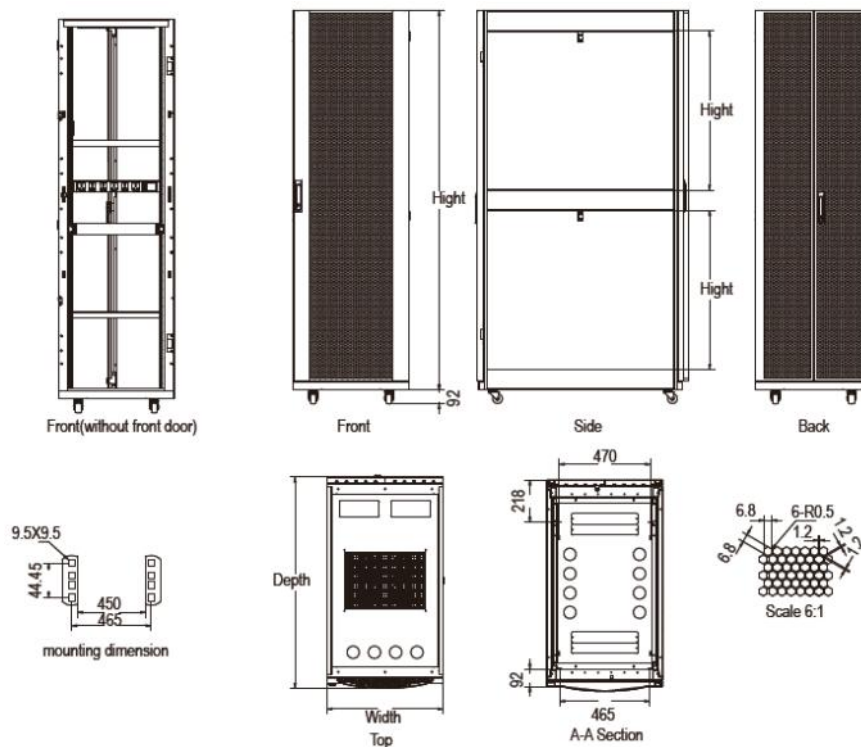


Doors Locking latches and Enhanced hinge.



SRF 42U FLOOR STANDING SERVER RACK & ENCLOSURE

Structural Dimension (600*1000mm)



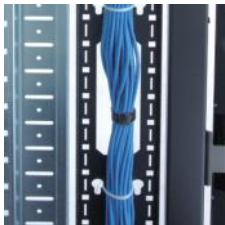
Physical Specification



Cut-outs in the Top
Allow for efficient routing of cables into the cabinet



Top Ventilation Panels
Optional placement of fans for Switches or Devices Heat Management



Vertical Cable Trunk
Provides additional cable management



Side Panels
Are removable with handle for better handling.



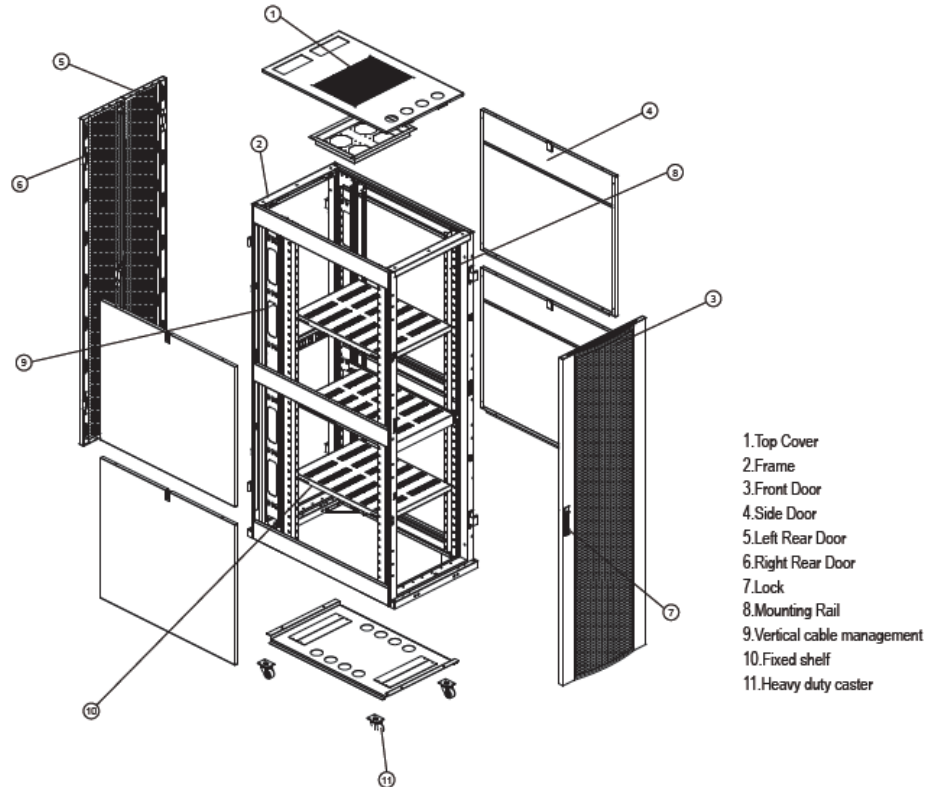
19" Mount
Universally adopted format (EIA-310) ensures compatibility across brands and equipment types.



Cabinet Base
Can open knock out for cabling and allows fresh air intake from below

SRF 42U FLOOR STANDING SERVER RACK & ENCLOSURE

Structural Diagram



Standard Accessories & Specification

S/No	Specification	Qty	Material	Surface Finish
1	Top cover	1	1.5mm cold rolled steel	Powder coated
2	Frame (nine-fold section steel)	2	2.0mm cold rolled steel	Powder coated
3	Front door	1	1.5mm cold rolled steel	Powder coated
4	Side panel	4	1.5mm cold rolled steel	Powder coated
5	back door	2	1.5mm cold rolled steel	Powder coated
6	Lock	6	—	—
7	Mounting rail	4	2.0mm cold rolled steel	Powder coated
8	Mounting angle	6	1.5mm cold rolled steel	Powder coated
9	Bottom plate	1	1.5mm cold rolled steel	Powder coated
10	Spacer (for 800 Width)	12	—	—
11	Heavy duty castors	4	—	—
12	Feet	4	—	—
13	Cage and nuts	40	—	—
14	Fixed shelf 1000mm depth (Optional)	1	1.5mm cold rolled steel	Powder coated
15	4 Fans shelf for top mount (Optional)	1	—	Powder coated
16	Vertical Cable Management (for 800 Width Optional)	2	ABS engineering plastics	

4 Fan Shelf



Fix Shelf



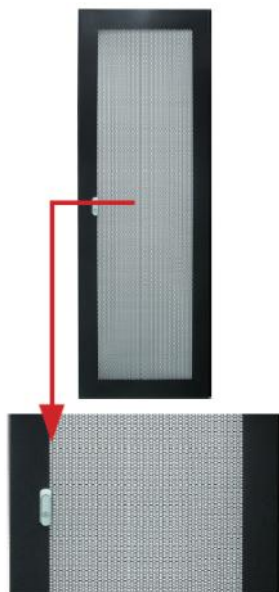
Vertical Cable Management



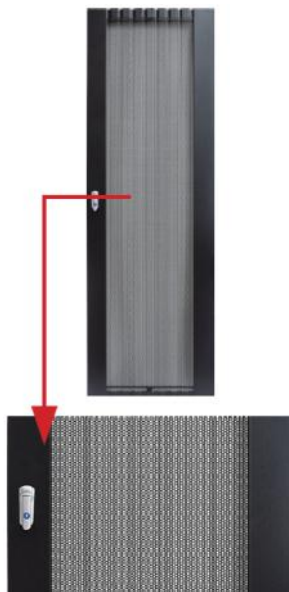
SRF 42U FLOOR STANDING SERVER RACK & ENCLOSURE

Doors Options

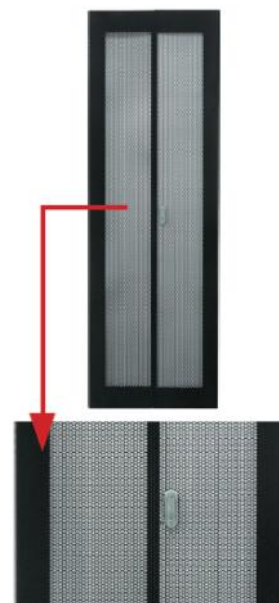
M
Curved
perforation steel door



K
Curved concavo-convex
perforation steel door
(hexagonal Type)



L
double swing steel door
(perforated)



Ordering Information

Part Number	Capacity U	Width/mm	Depth/mm	Height/mm
CS-SRF-42-610-XXX	42U	600	1000	2055
CS-SRF-42-611-XXX	42U	600	1100	2055
CS-SRF-42-612-XXX	42U	600	1200	2055
CS-SRF-42-810-XXX	42U	800	1000	2055
CS-SRF-42-811-XXX	42U	800	1100	2055
CS-SRF-42-812-XXX	42U	800	1200	2055

Color Options

B—Black(RAL9004)



G—Gray(RAL7044)



Product Part Number Description:

