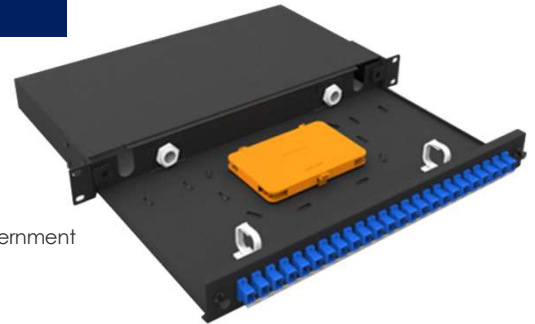


1U Rack Mount DR (ODF)/Enclosure

Features and Benefits

Applications:

- Data Centers: fixed patch panel for cross-connects between switches, servers, or OLTs.
- Fiber-to-the-Home (FTTH): Splices and distributes fibers to subscriber lines in multi-dwelling units (MDUs) or street cabinets.
- Metro Networks: Connects long-haul fibers to local distribution points.
- LAN/WAN Connectivity: Manages fiber links between buildings or floors in corporate/government campuses.



Key Features:

- The 1U ODF patch panel can accommodate up to 48 fibers in a single 1U rack space.
- Snap-in adapter plates and removable cover provides for easy access and installation.
- Quick deployments in enterprise networks or data centers.
- Various panel plate to fit different adapter interface.
- Hinged front panel is easy to be turned over & be fixed by snap-in locker.
- Easy for management and operation.
- Supports SC simplex, duplex or LC duplex connectivity



Standard:

- EIA 19" rack
- RoHS



Physical Specifications

Structure:

Enclosure Type: 1U 19" Rack mount

Capacity: 48LC, 48SC & 24FC terminations

Modular Type : 12 to 24 Adapter Panel

Adapter: SC/LC (Simplex, Duplex)/FC/ST (Simplex)

Cable Entry Direction: Rear Entry

Material: CRS Cold-Rolled Steel

Dimension: 44Hx480Wx285D mm

Color: Black



Ordering Information

1U Enclosure Part No.	24C Splice Tray Panel Part No.	LC Duplex Panel Part No.	SC Duplex Panel Part No.	SC 2 x 08 Splitter Panel Part No.	SC 2 x 16 Splitter Part No	SC 2 x 32 Splitter Part No
CS-RM1FDR1D-XX	CS-DR1D-24C	CS-DR1D-DLC-24	CS-DR1D-DSC-24	CS-DR1D-2X08	CS-DR1D-2X16	CS-DR1D-2X32